

INSTALLATION INSTRUCTIONS

DESCRIPTION: Soft Side Cover Kit
 PART NUMBER: 1XD-F17J0-V0
 MODEL: Viking



⚠ WARNING

Please read and understand these instructions completely before installation to avoid possible injury, or damage to the accessory or vehicle.

- This weather enclosure is not intended to prevent injury during collisions or rollovers.
- Always wear a seat belt and a helmet when riding in this vehicle

NOTICE:

- This installation requires a torque wrench and a pop rivet gun and should be performed by an authorized Yamaha dealer or other qualified technician.
- Do not tow the vehicle on an open trailer with this accessory installed, as the accessory is not designed for use at highway speeds.

WARRANTY INFORMATION:

Genuine Yamaha Accessories are covered by a one-year limited warranty against defects in material or workmanship. Labor for replacement of defective components is not covered. See your Yamaha dealer for a copy of the warranty statement.

DEALER OR INSTALLER:

These instructions contain important information for future reference and *must* be given to the customer.

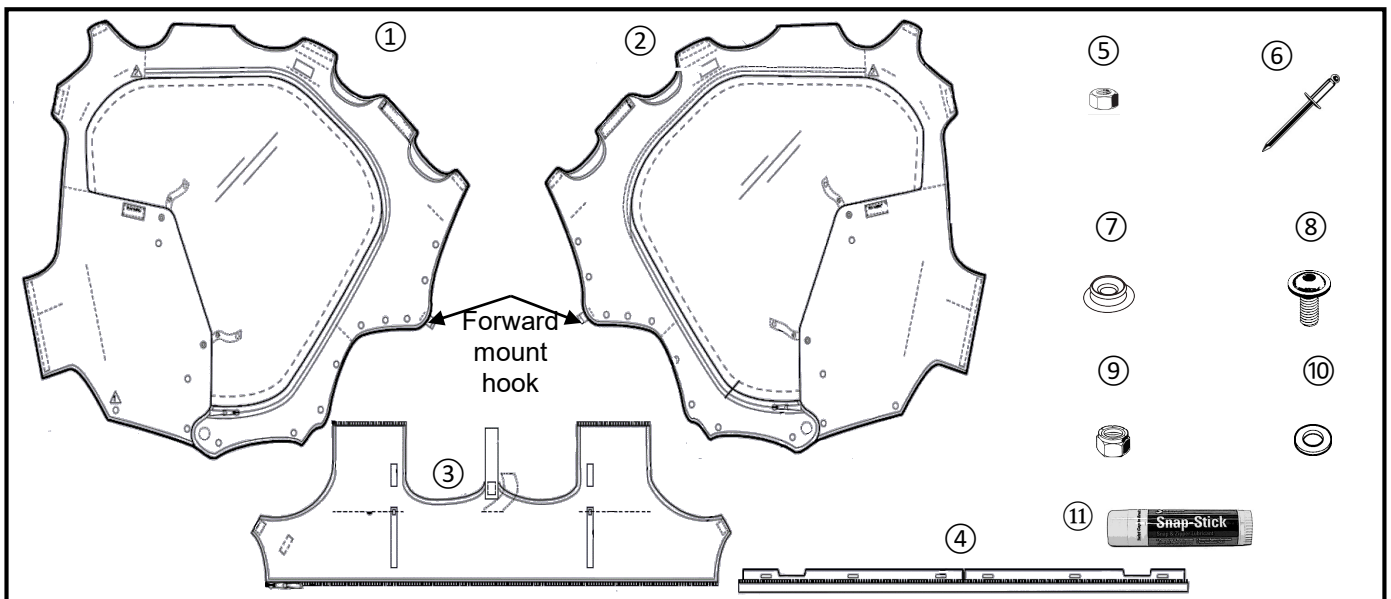
COMPONENTS NOT INCLUDED IN THIS KIT:

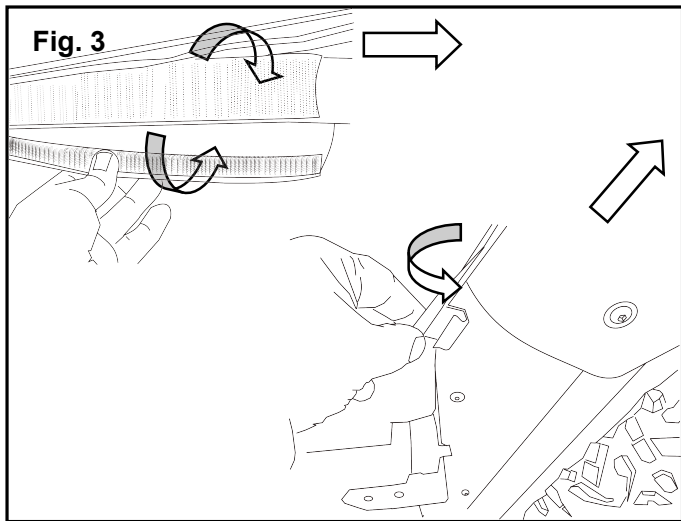
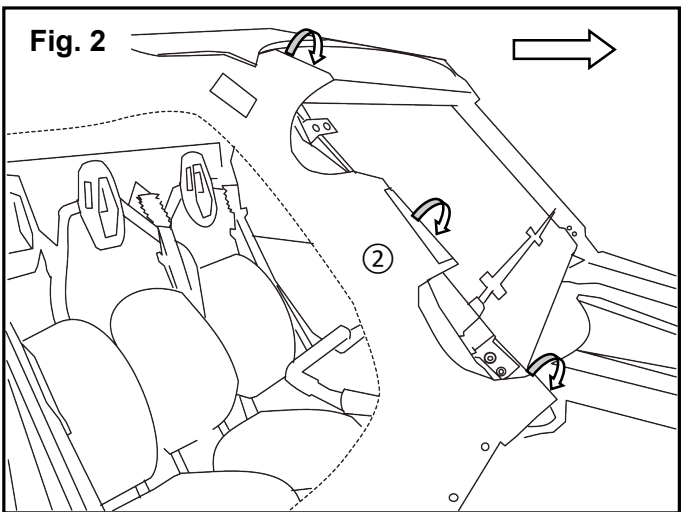
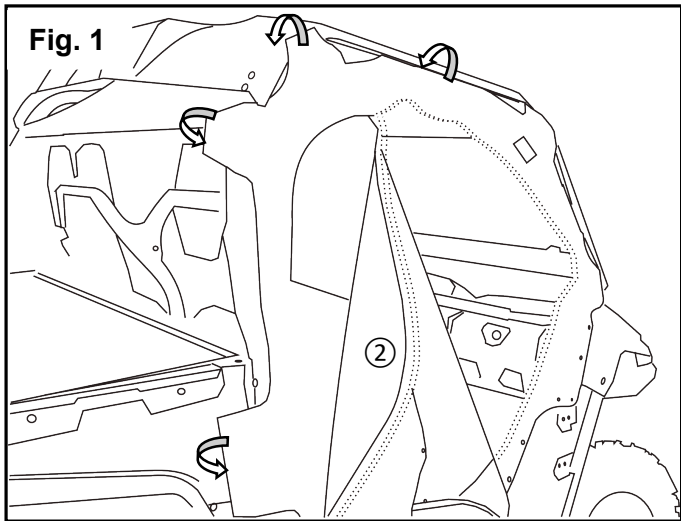
Folding Windshield Kit (p/n: 1XD-F83J0-V0-00), Rear Window Kit (p/n: 2PG-K750A-T0-00 or 2PG-K750A-V0-00), Hard Top Kit (p/n: 1XD-K84A0-V0-00), Soft Top Kit (p/n: 1XD-K830V-T0-00 or 1XD-K830V-V0-00)

PARTS LIST:

No.	Part Number	Description	Qty
--	1XD-F17J0-V0	Soft Side Cover Kit	--
①	*	Left Side Cover	1
②	*	Right Side Cover	1
③	*	Windshield Seal	1
④	*	Windshield Seal Mount Strip	1
⑤	*	3mm Rivet Nut	2
⑥	*	Rivet	30
⑦	*	Snap	30
⑧	*	M6 Bolt	6
⑨	*	M6 Nylock Nut	6
⑩	*	M6 Washer	6
⑪	*	Snap Stick	1

* Part supplied with kit only and not available separately.



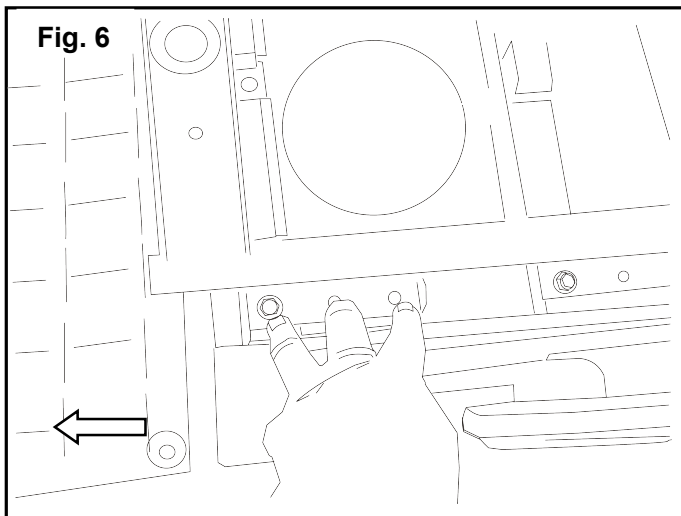
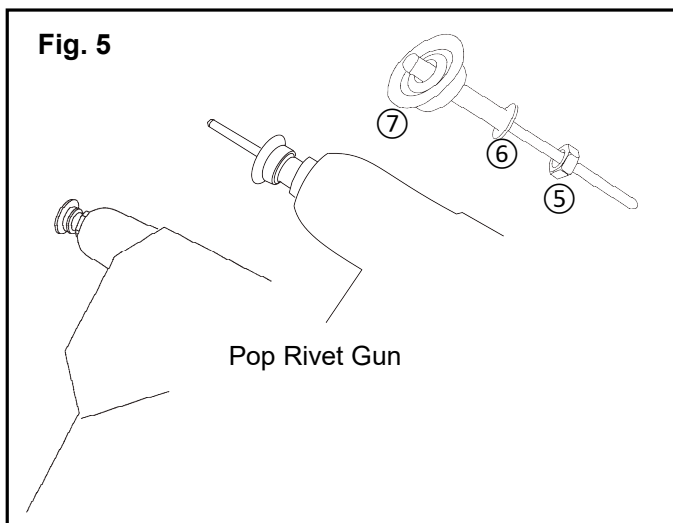
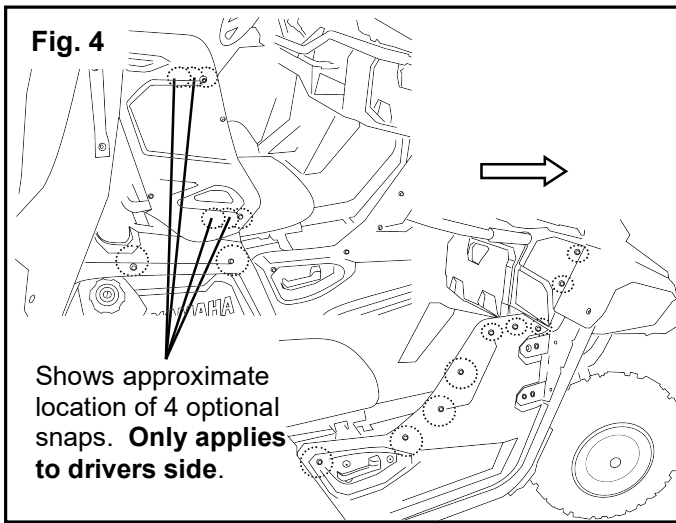


PREPARATION:

- Place the vehicle on a secure and level surface.
- Set the parking brake.
- Clean the mount surfaces before starting installation.

INSTALLATION:

1. Starting on the right side of the vehicle, drape the Right Side Cover ① over the roof tubes. Start in the rear of the cab, wrap 4 tabs around the roof tube as shown in Fig. 1.
2. In the front of the cab, wrap 3 tabs around the roof tube as shown in Fig. 2.
3. Working from the inside, wrap the hook side of each tab around the roof tube and secure it to the loop side as shown in Fig. 3. Seal all 7 mounting tabs around the roof tubes.
4. Secure the forward mount hook inside the channel as shown in Fig. 3.
5. Ensure the Right Side Cover ① is centered on the tube frame and is hanging evenly front and rear.



6. Without putting tension on the side cover, mark the locations of each of the 13 snaps on the vehicle panels as shown in Fig. 4.
7. Drill out the snap mount holes with a 3mm drill. Use a tape mark on the drill bit to set the drill depth at 25mm.
8. Use a pop rivet tool (not included in this kit) to install the 13 Snaps (7) on the right side of the vehicle. See Fig. 5. Follow these steps to install each rivet:

- Insert Rivet (6) into Snap (7),
- place 3mm Rivet Nut (5) on Rivet (6).
- Put Rivet (6) into pop rivet tool, and
- insert Rivet into body with tool.
- Pull the handle on the pop rivet tool to close the Rivet (6) and complete the installation of the Snap (7).

9. Repeat steps 1 through 8 on the Left side.

10. **Optional Installation Step:** If the driver's seat is already adjusted and will not be moved forward or back, skip this step.

The side bolster is attached to the seat frame. If the driver's seat is moved, the side cover will need to be adjusted. See Fig. 7 for a top view of the 3 driver's seat adjustment positions.

With the side cover installed on the driver's side, mark the position on the side bolster for the two Snaps (7) (shown in Fig. 6). Then, move the seat and mark the side bolster for snap placement. Drill the holes and install the Snaps (7) following the process in steps 6, 7, and 8. Extra rivets and snaps are provided for the 4 additional snaps installed in this optional step.

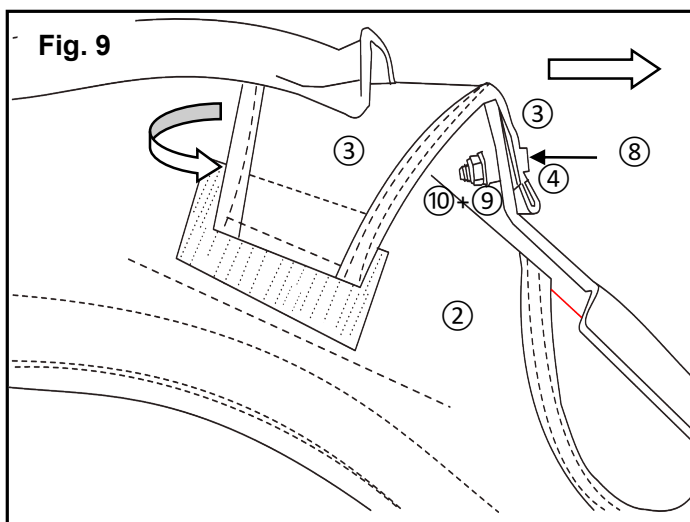
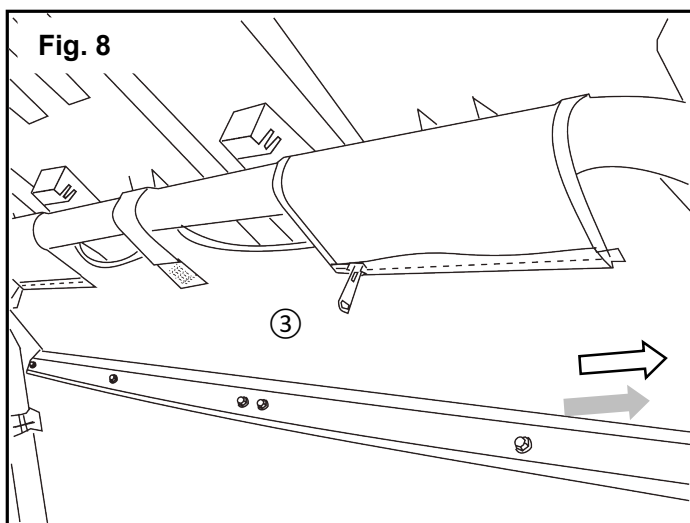
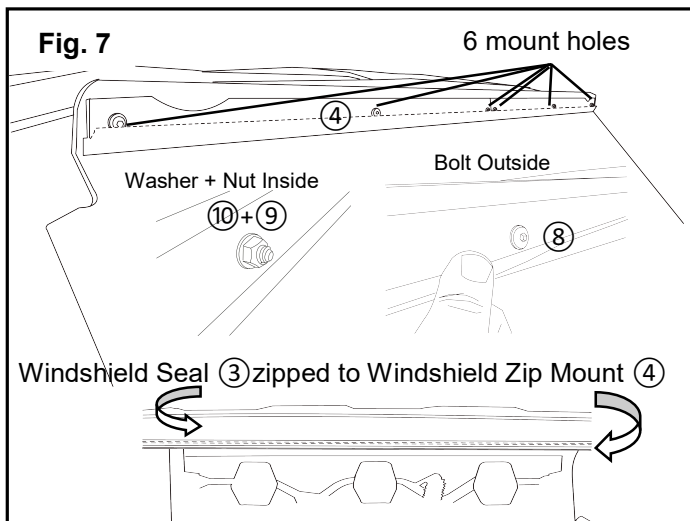
11. If the folding windshield is installed, remove it and do this step on a work bench.

⚠WARNING

Take care to protect the surface of the windshield from being scratched or damaged.

Lay the Windshield Seal Mount Strip (4) along the top edge of the outside surface of the windshield. Center the strip side to side and between the top of the screen and the first bend as shown in Fig. 7.

12. Mark the locations of the 6 openings in the Windshield Seal Mount Strip (4). Use a 7mm drill bit to drill out the mount holes.



13. From the outside of the windscreen, install the Windshield Seal Mount Strip (4) to the windscreen. Install M6 Bolts (8) through the holes. See Fig. 7.

14. Working from the inside of the windscreen, install M6 washers (10) and M6 Nylock Nuts (9) to the bolts and torque to to 2.7 Nm (0.28 m-kgf, 2 ft-lbf). See Fig. 7.

15. Install the folding windscreen to the Vehicle.

16. Zip the Windshield Seal (3) to the Windshield Seal Mount Strip (4), working right to left. See Fig. 7.

17. Working with the Windshield Seal (3), feed the securing tabs through the space between the top and the roof tube frame. Wrap the two zip tabs around the tube and zip. Wrap the hook and loop strap around the tube and press to secure as shown in Fig. 8.

18. Feed tabs on right and left side of the windscreen under the top and press against the 'loop' patch to secure as shown in Fig. 9.

Note: The fabric will relax and wrinkles will disappear a few days after installation.

MAINTENANCE:

Periodically, check torque and tightness on all hardware and straps. If loose hardware is found, re-torque or re-tighten. If zippers become hard to operate, apply (11) Snap Stick to lubricate the side cover zippers.

CARE AND CLEANING:

Use a clean soft cloth and mild detergent with warm water to clean the top. Rinse and dry. Use Yamaha Windshield & Visor Plastic Cleaner & Conditioner (p/n ACC-PLASP-OL-11) to clean the plastic windscreen and windows. Use (11) Snap Stick to lubricate the snaps and zippers as needed.

CUSTOMER SERVICE:

For further information see your Yamaha dealer.

ESTIMATED TIME TO INSTALL: 0.4 HR